



# META RADIUS BLOCK

10.75 " Radius Block for Advanced Conductors



**Efficiency / Strategy** Designed for stringing advanced conductors with drones or helicopters. The Meta Radius Block (MRB) is the first stringing block that puts a large radius on the topside of the utility crossarm while maintaining a small profile. The non-conductive flyarm and spring-loaded gate easily guides the pull line into position. MRB is a new block design that will help advance electrical circuits.



**Made of Quality Materials,** The MRB is superior in strength and its lightweight, non-conductive properties align directly with OSHA1910.269 (1)(2). The MRB block frame is machined from 6061 billet AL and the roller support wings are enclosed in HDPE. Delrin inner rollers protect conductors from galling.



**Flexibility** With a new pivoting base design the MRB adapts to many different applications by attaching easily to cross arms or poles. The MRB's multiple configurations accommodate different pull angles and unique situations. Used for Distribution, Transmission, and Underground applications.



**Economical / Safe** Lightweight, non-conductive properties reduce arc flash injuries and companies will see less sprain and strain while simultaneously expediting installation. The industry will benefit from the improved safety and efficiency built into this new lightweight design.

**Products Co-Created with Lineworkers for Lineworkers**

 **Seekells Innovations**

1172 Railroad Avenue, Vallejo, CA 94592  
tel - 888.817.7018 - fax - 888.415.0645

**METADESIGNMFG.COM**

**META**  
DESIGN & MANUFACTURING

**Cross Arm Mount**

-Geometry accommodates  
all crossarm dimensions

**Pivot Mount**

-180° of freedom  
-10 positions on 45°  
-Lightweight Aluminum

**Large Capacity**

-Ø2" throat permits  
passage for sleeves  
and connections.

**Pole Mount**

-Light & Durable AL  
-Geometry allows  
pole diameter range  
2" or 3" Straps available  
TBD

**WORKING LOAD LIMIT:**

Base Mounted: 2,500 Lbs  
Y-Ball Mounted: 12,000 Lbs  
[TESTED BY 3RD PARTY]

**TOTAL WEIGHT: 13.5 Lbs**

**DIMENSIONS: 18" W x 8" D x 14.5" H**

**† Seekells Innovations**  
**Patented Technology**

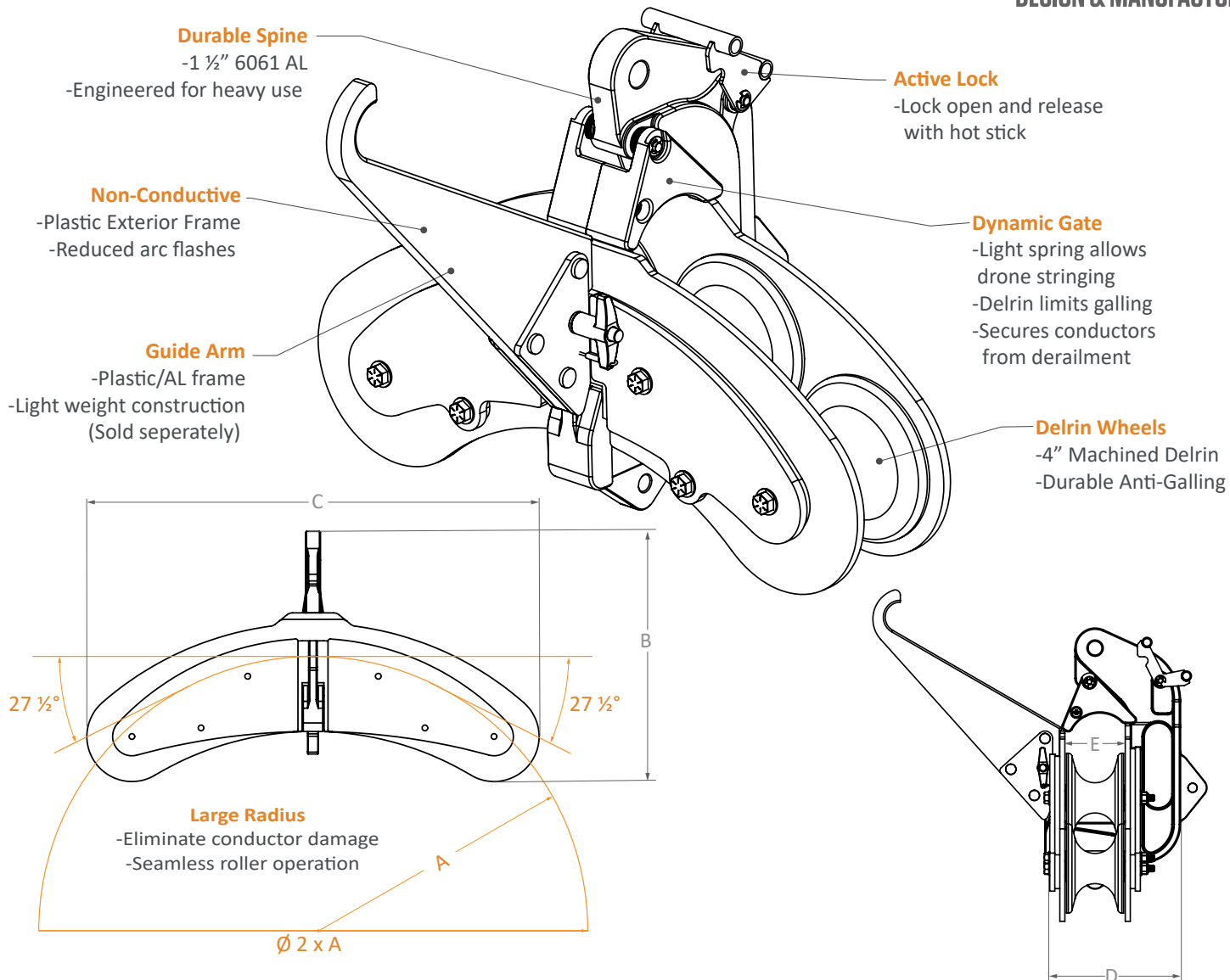
US Patent # 10,998,700  
US Patent # 10,763,648  
US Patent # 11,476,596

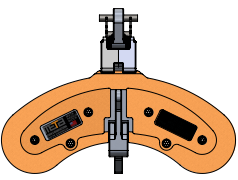
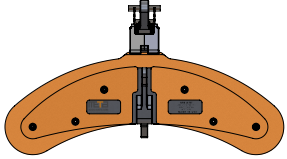
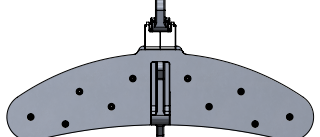
**SHORT LEAD TIME - SHIPS ANYWHERE IN U.S.A. CALL 888 817-7018**

1172 Railroad Avenue, Vallejo, CA 94592 tel - 888.817.7018 - fax - 888.817.7029 **METADESIGNMFG.COM**

MADE IN





|                      | A   | B     | C     | D    | E  | WLL HANGING | WLL MOUNTED | WEIGHT   |
|----------------------|---|-------|-------|------|----|-------------|-------------|----------|
| R10 <sup>3/4</sup> " |  | 13"   | 18 ½" | 6 ½" | 3" | TBD         | TBD         | 13 ½ Lbs |
| R16 <sup>3/4</sup> " |  | 14 ⅝" | 26 ⅝" | 6 ½" | 3" | TBD         | TBD         | 18 ½ Lbs |
| R24 <sup>3/4</sup> " |  | 15"   | 32 ⅝" | 7"   | 3" | TBD         | —           | 30 ½ Lbs |

**SHORT LEAD TIME - SHIPS ANYWHERE IN U.S.A. CALL 888 817-7018**